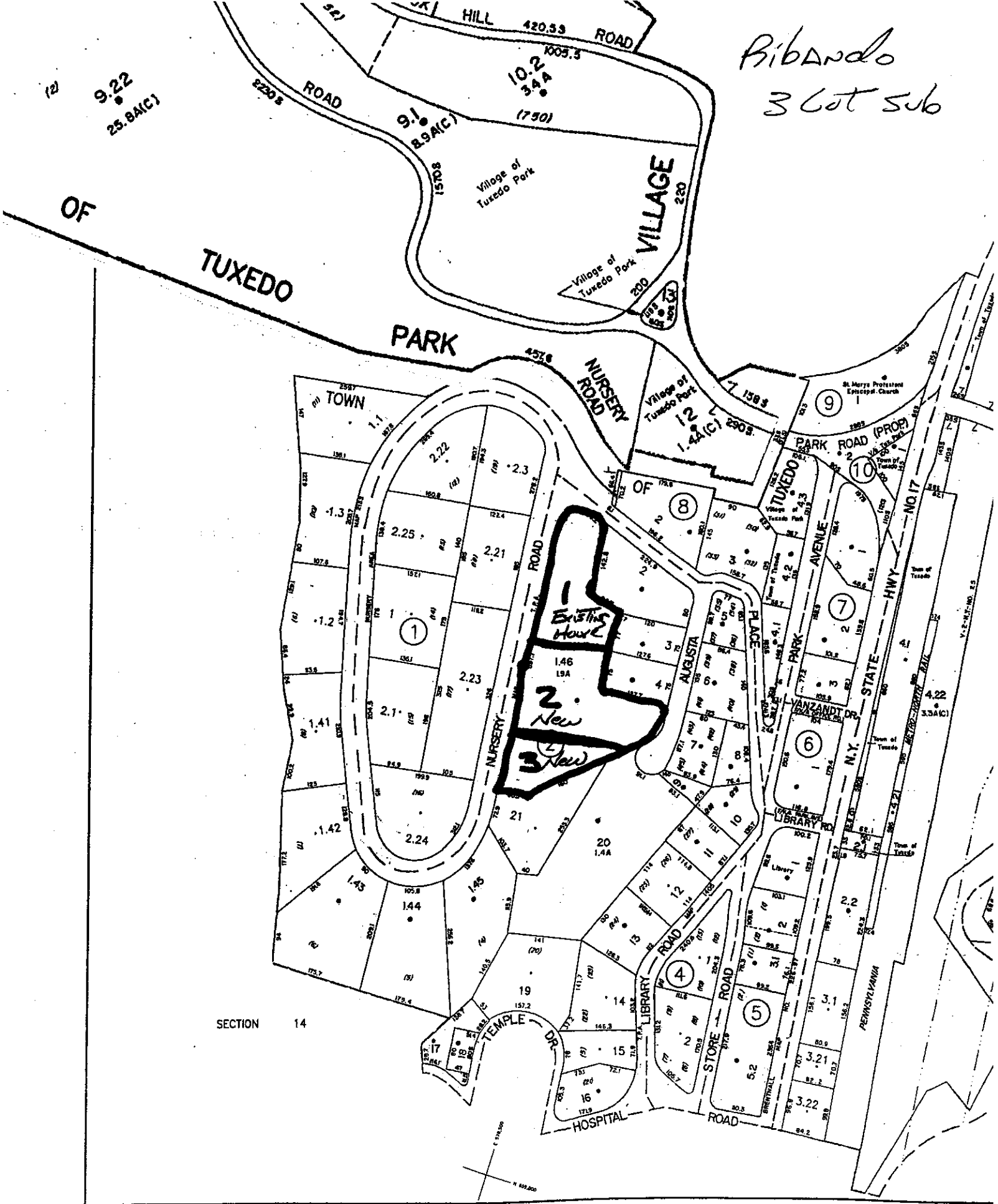


Ribando
3 lot sub



SECTION 14

LEGEND

STATE OR COUNTY LINE	FILED PLAN LOT LINE	TAX MAP BLOCK NO.	FILED PLAN BLOCK NO.
CITY TOWN OR VILLAGE	EASEMENT LINE	TAX MAP PARCEL NO.	FILED PLAN LOT NO.
BLOCK OR SECTION LIMIT	MATCH LINE	AREAS (D) 11.1A or (C) 11.1A(C)	STATE HIGHWAYS N.Y. STATE HWY NO 17
SPECIAL DISTRICT LINE	WATER FEATURES	DIMENSIONS (D) 11.1A or (C) 11.1A(C) 75'	COUNTY HIGHWAYS COUNTY ROAD NO 4
PROPERTY LINE	GRID COORDINATE/CENTRE	PORTION OF TAX LOT P/O 1-1-1	TOWN ROADS TOWN ROAD 1

ORANGE COUNTY

Prepared by
Orange County Tax Map Department
124 Main Street, Goshen, N.Y. 10924
Phone 845.291.2496 Fax 845.291.2495

NOT MAINTENANCE, ALTERATION OF ANY PORTION OF MAP IS PROHIBITED WITH OF THE O.C. REAL PR